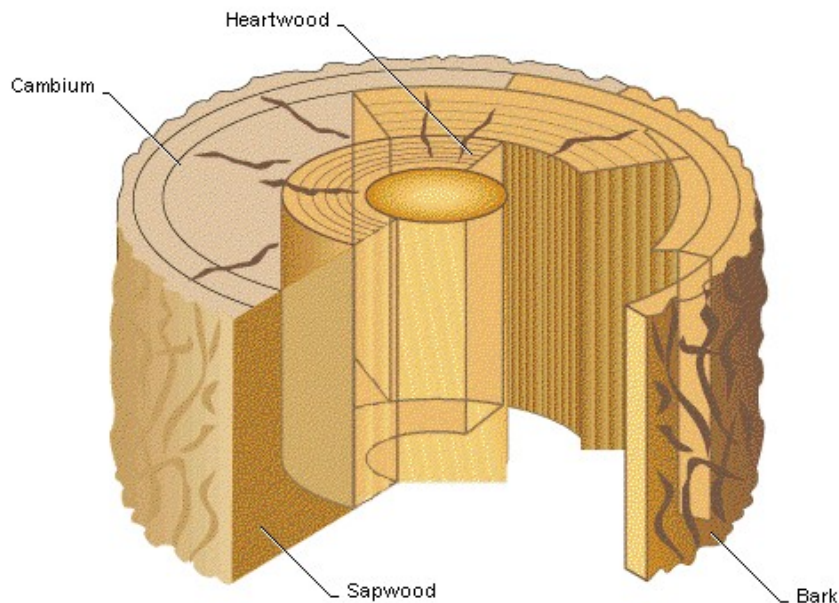


HERITAGETM LOG HOMES

WHATS IN YOUR LOG?



HEARTWOOD: The dense inner core of Eastern White Pine that no longer conducts water. This is the most stable and durable part of the tree. **THE SOURCE OF "LOG WALL 40", USED BY HERITAGE LOG HOMES.**

SAPWOOD: The soft wood between the inner bark and the heartwood serving to conduct water. This wood is usually a light color and not as strong or as dense as the heartwood.

CAMBIUM: The layer of the tree that is alive and actively growing. This layer is one cell thick and is between the sapwood and the bark. By dividing over and over it forms new wood and causes the expansion and growth of the tree.

BARK: The tough outside protector of the tree.

www.heritageloghomesinfo.com